



580 000 €

Occupational local commercial

Surface : 73 m<sup>2</sup>

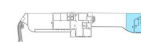
Exposition : Sud



## Local commercial Cap-d'Ail

CAP D'AIL commercial premises in a new building, 32 m<sup>2</sup> + 41 m<sup>2</sup> terrace, direct access, window and customer parking. Panoramic sea view and Saint Jean Cap Ferrat facing south.

Document non contractuel - 26/12/2024



VIRGIN	surface maximale	73,00 m <sup>2</sup>	étage	R+2
	surface utile	32,00 m <sup>2</sup>	type	BUREAU
	surface totale	41,00 m <sup>2</sup>	lot	23

